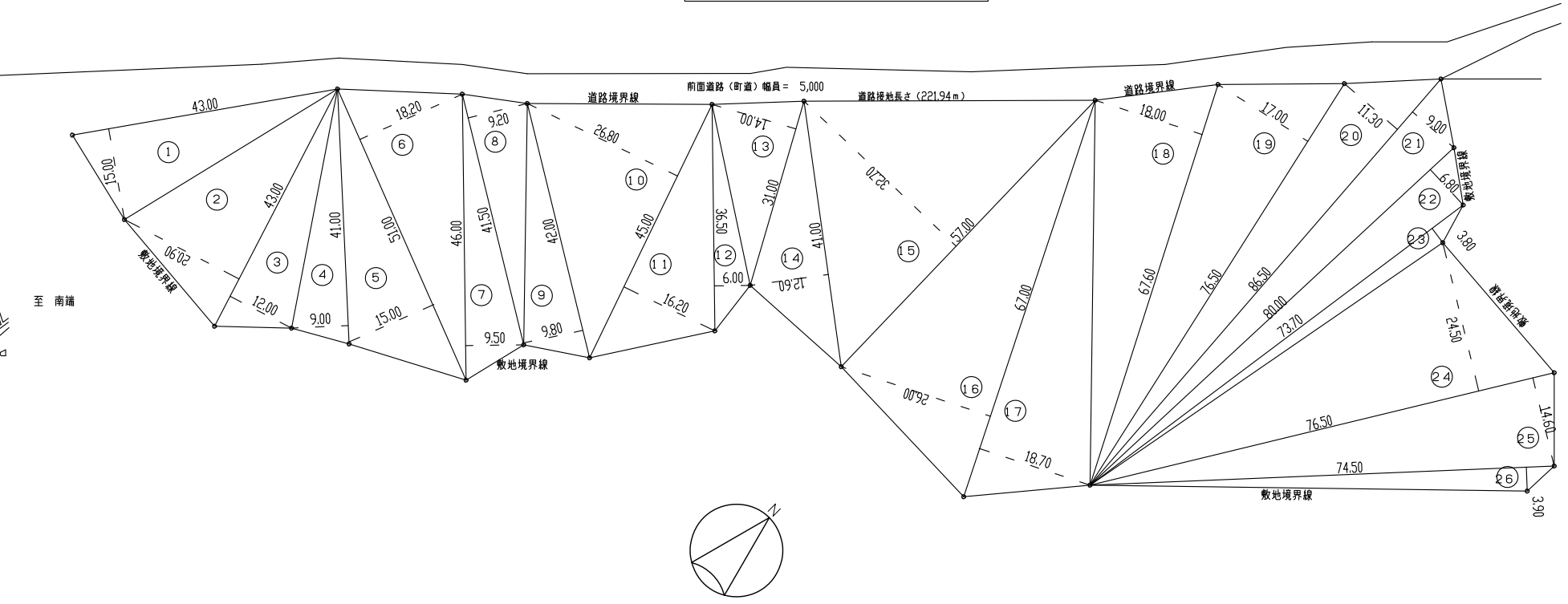
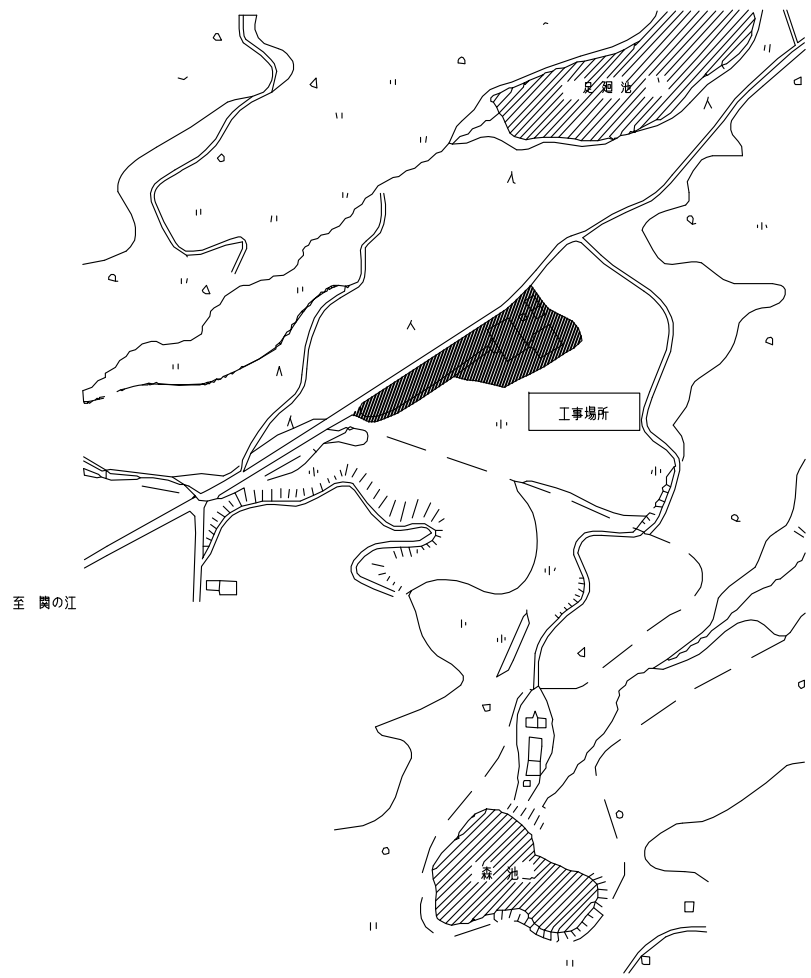


敷地求積図 1/700

付近見取図



番号	底辺	高さ	積面積
1	43.00	15.00	645.000
2	43.00	20.90	898.700
3	43.00	12.00	516.000
4	41.00	9.00	369.000
5	51.00	15.00	765.000
6	51.00	18.20	928.200
7	46.00	9.50	437.000
8	41.50	9.20	381.800
9	42.00	9.80	411.600
10	45.00	26.80	1,206.000
11	45.00	16.20	729.000
12	36.50	6.00	219.000
13	31.00	14.00	434.000
14	41.00	12.60	516.600
15	57.00	32.70	1,863.900
16	67.00	26.00	1,742.000
17	67.00	18.70	1,252.900
18	67.60	18.00	1,216.800
19	76.50	17.00	1,300.500
20	86.50	11.30	977.450
21	86.50	9.00	778.500
22	80.00	6.30	504.000
23	73.70	3.80	280.060
24	76.50	22.50	1,721.250
25	76.50	11.80	902.700
26	74.50	3.90	290.550
合計			21,287.510/2
敷地面積			10,643.755